

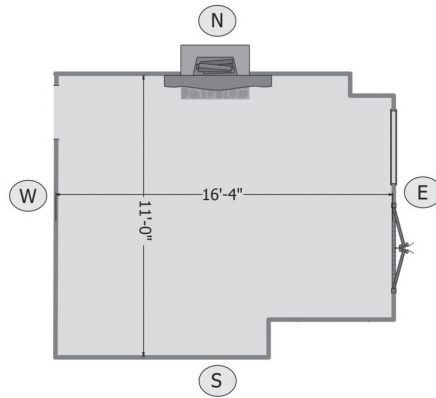
MEASURE AND SHOOT

STEP 1

DRAW FLOOR PLAN

Get a pencil. Get a piece of paper. Sketch your room. Label each wall as either North, South, East, West.

Now that you have the shape of the room, measure it in Feet and Inches.



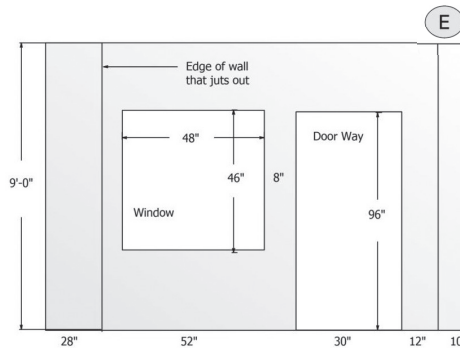
STEP 2

DRAW WALLS

Draw a rectangle for each wall. Label each wall as either N,S,E or W.

Draw permanent features like, windows, doors and fireplaces.

You need to measure each section of the wall placement of the features and the height of the wall in Feet and Inches.



STEP 3

MEASURE THE FURNITURE L" X W"

Measure L" X W" of the important pieces that will remain or you'd like to repurpose from other places like sofas, chairs, tables, beds, ottomans, dressers, artwork, mirrors, lamps, area rugs and kid stuff etc.



STEP 4

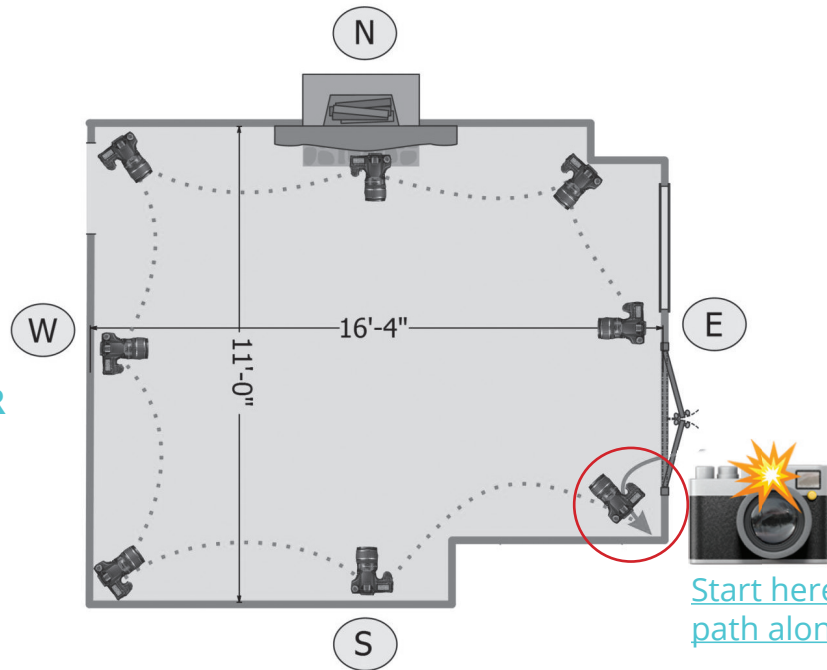


MEASURE AND SHOOT

+

STEP 4

PHOTOGRAPH YOUR ROOM



Start here and follow the path along the dotted line.

TIPS

1. Remove clutter and crap
2. Take photos during the day
3. Turn on all the lights
4. Try taking non-flash photos first
5. Try turning the camera vertically if needed
6. Try standing on a chair
7. Try a glass of wine

Return the clearst and best photos, drawings and furniture/art measurements. You can transfer larger files for free at wettransfer.com, share a google folder with me or email them to info@relovedny.com.